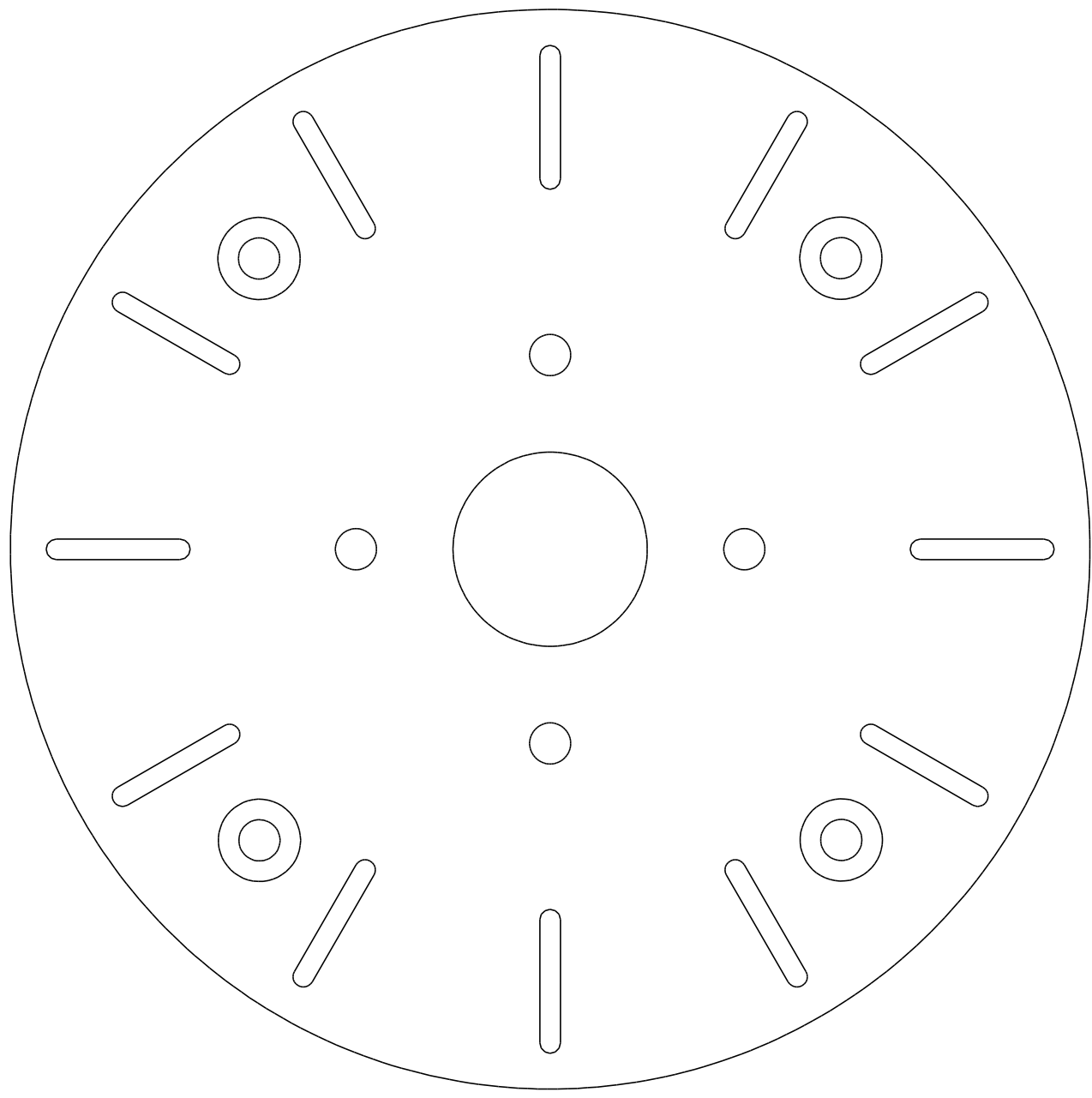
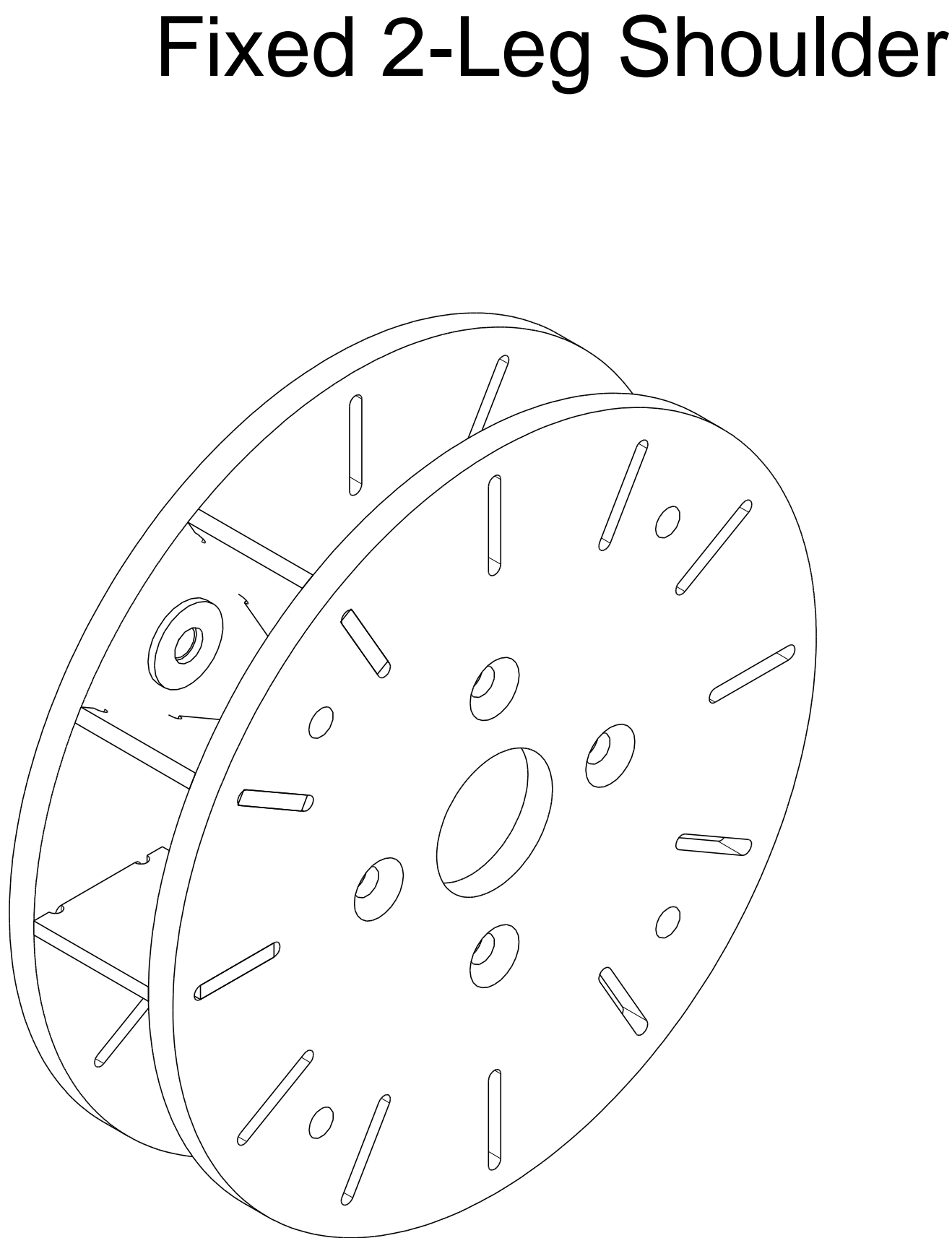


Shoulder Hub Inner

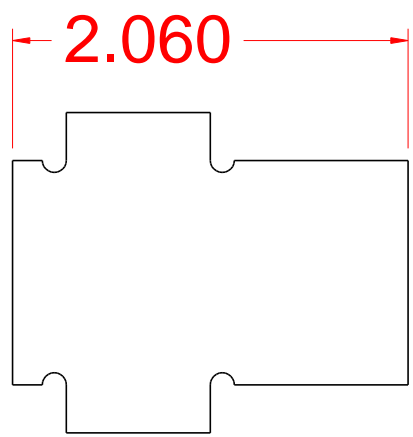


Shoulder Hub Outer

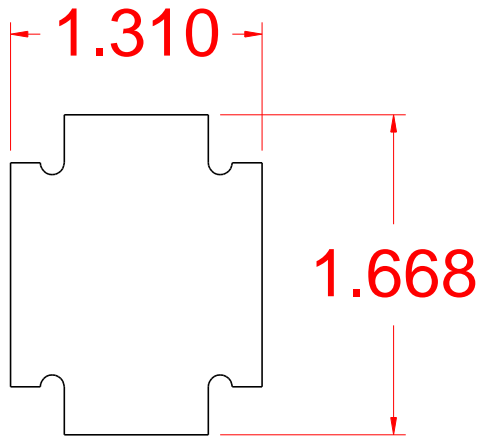


Fixed 2-Leg Shoulder

Shoulder Hubs
All .25 thick
Note Countersinks as shown
Canter Hole is 1.18 in (30mm)
Bolt Holes are .25 in
Adjust to match bolts you use



Riser
Make 16 - .125



Riser Short
make 8 - .125

Shoulder Edge - make 2 - .040

