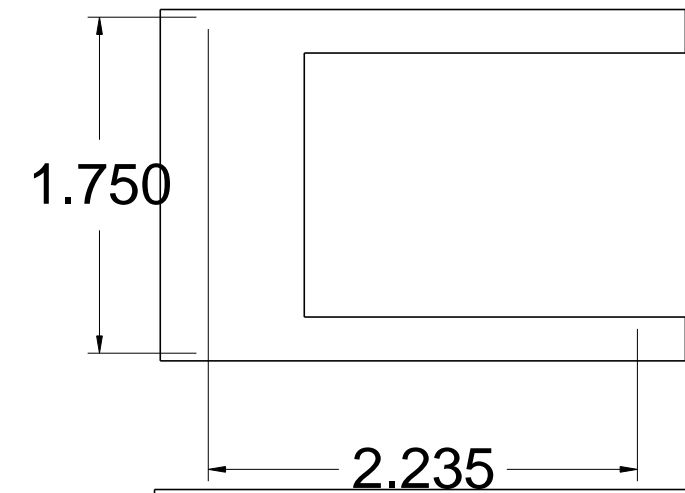
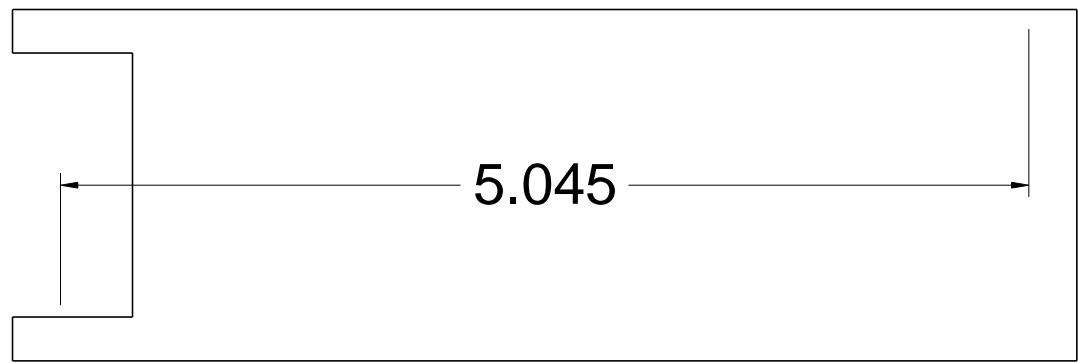


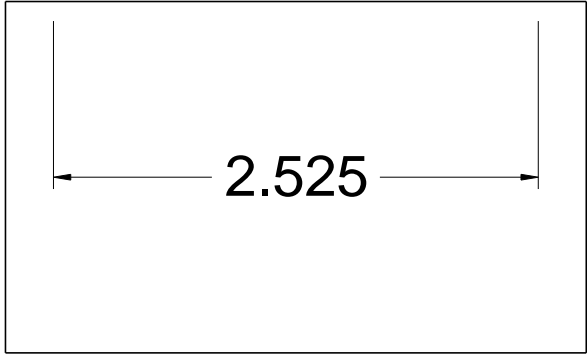
Shoulder Skin  
.040 thick  
Make 2



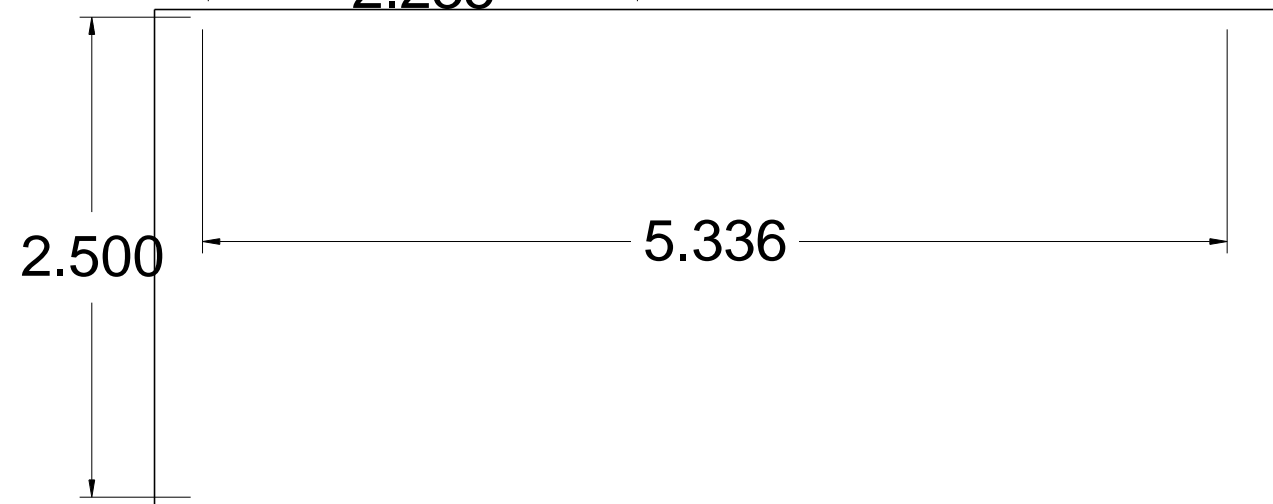
Under Shoulder Skin  
.040 thick  
Make 2



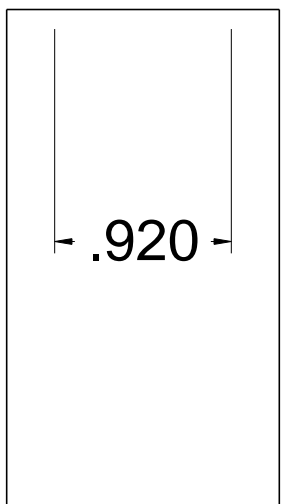
Leg Above Slot Skin  
.040 thick  
make 2



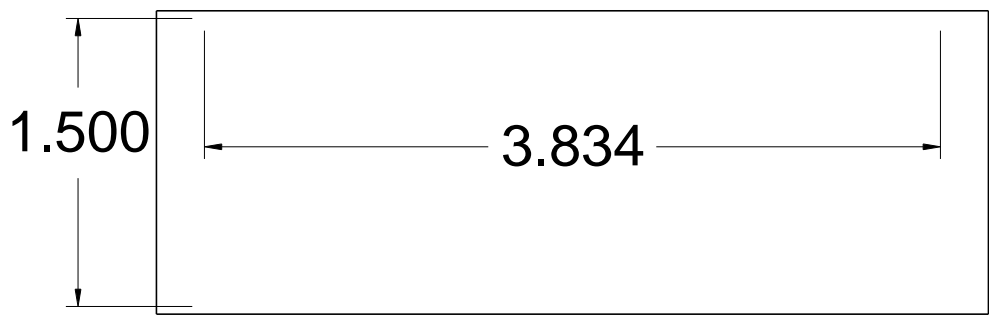
Leg Below Slot Skin  
.040 thick  
Make 2



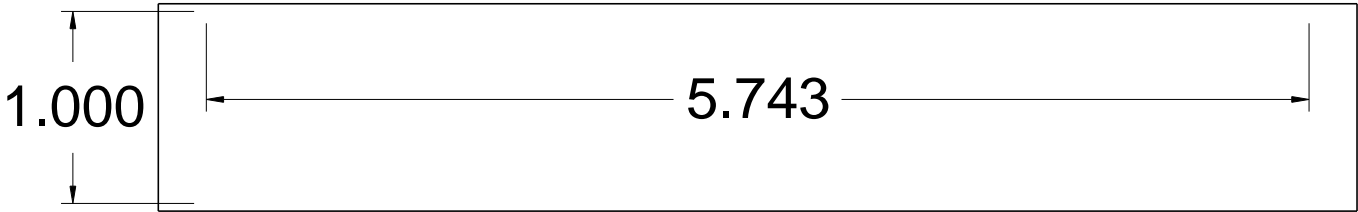
Ankle Top Skin  
.040 thick  
make 2



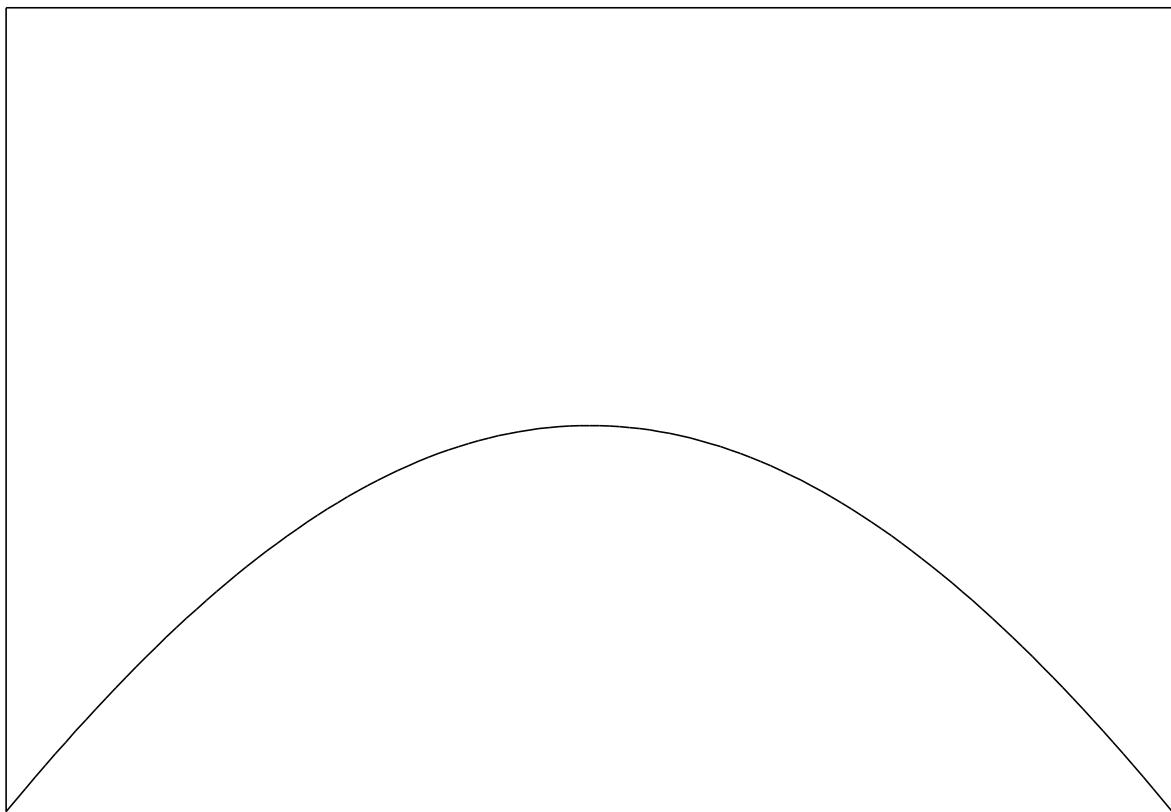
Ankle Gap Skin  
.040 thick  
make 2



Ankle Plug Skin - .040 thick - Make 1



Ankle Bolt Skin - .040 thick - make 1



Ankle Curve Skin  
.040 thick  
make 1

Leg and Ankle Skins  
Note: parts on this page are oversize  
by .080 in width and .5 in length  
so that they can be trimmed to fit

Leg Drawings pg 5/5

Copyright Media-Conversions - Released for non-commercial use ONLY!

DRAWN	DATE 1/5/2012	<div>MediaConversions</div>		
CHECKED				
QA				
MFG		SIZE C	FSCM NO.	DWG NO. Leg Layers & Naming
APPROVED		SCALE		REV
				SHEET