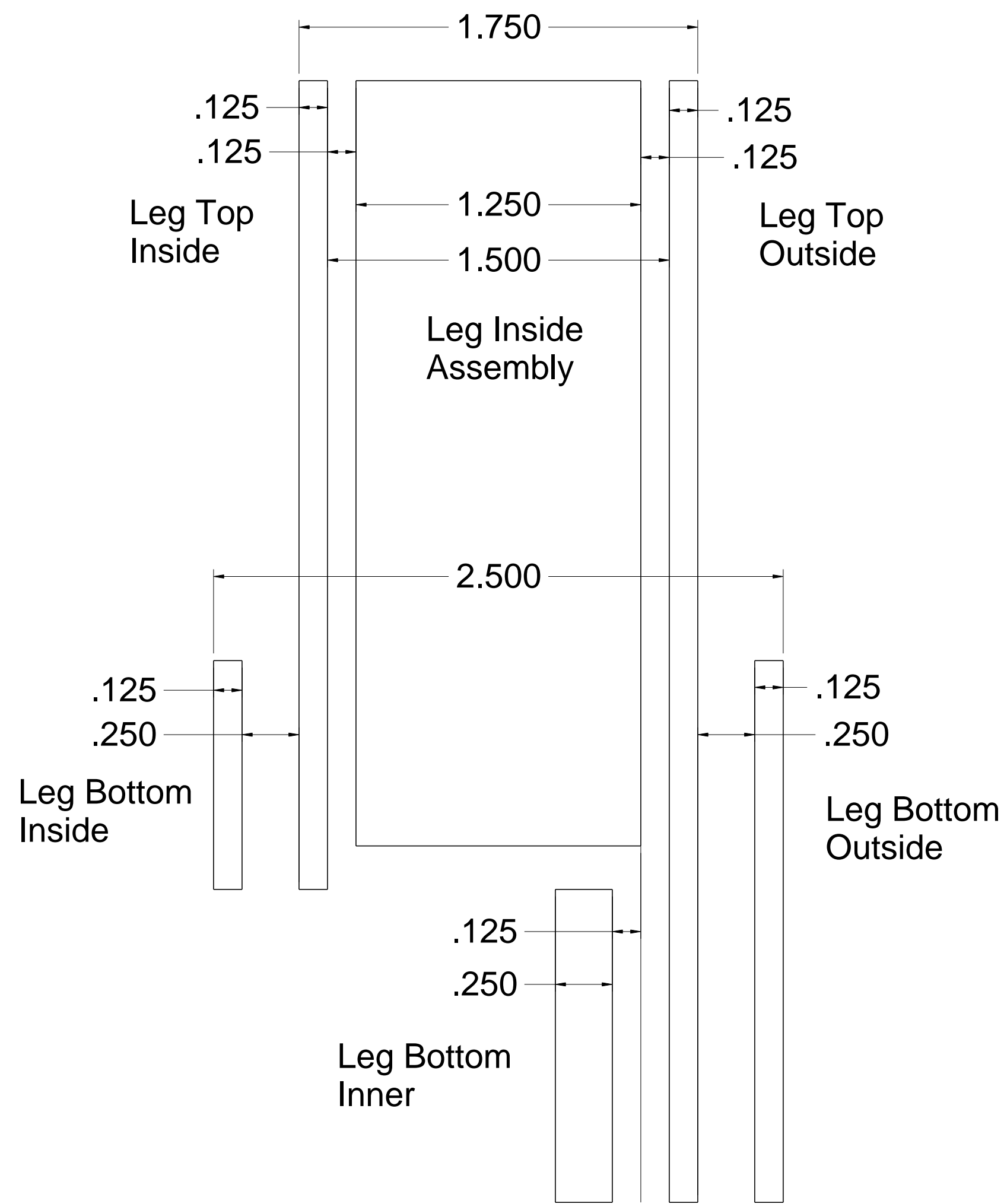
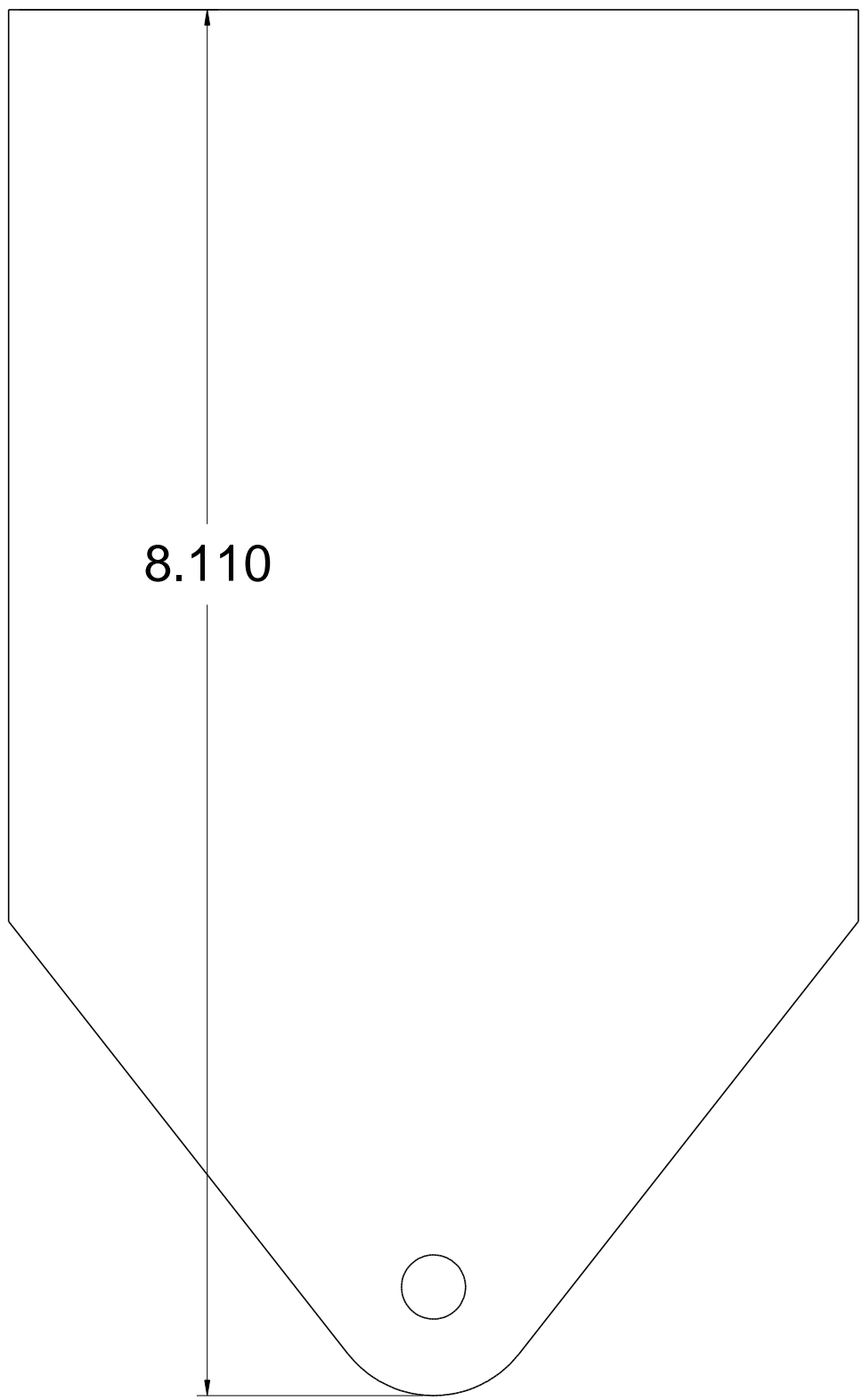


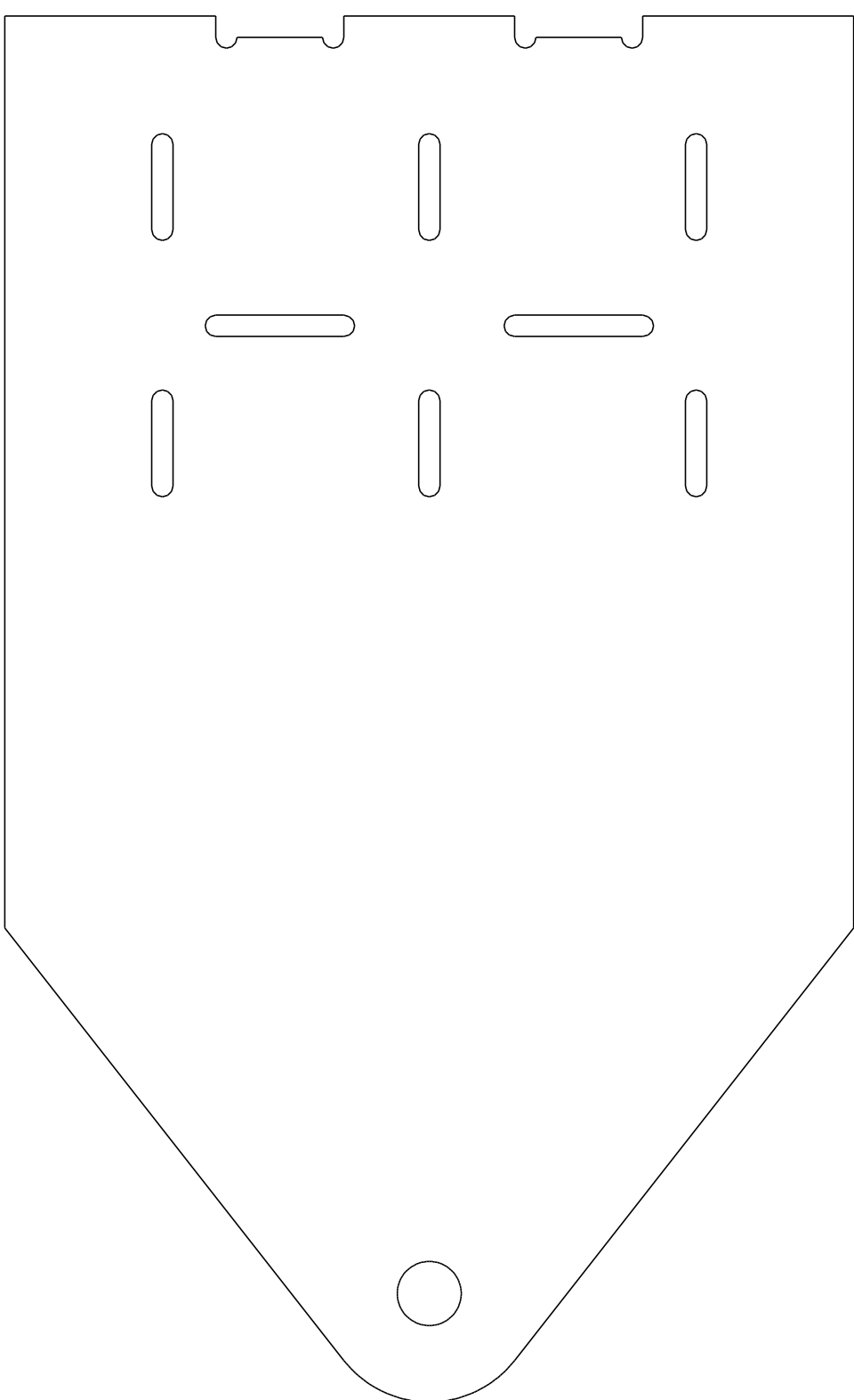
Leg Layer Naming



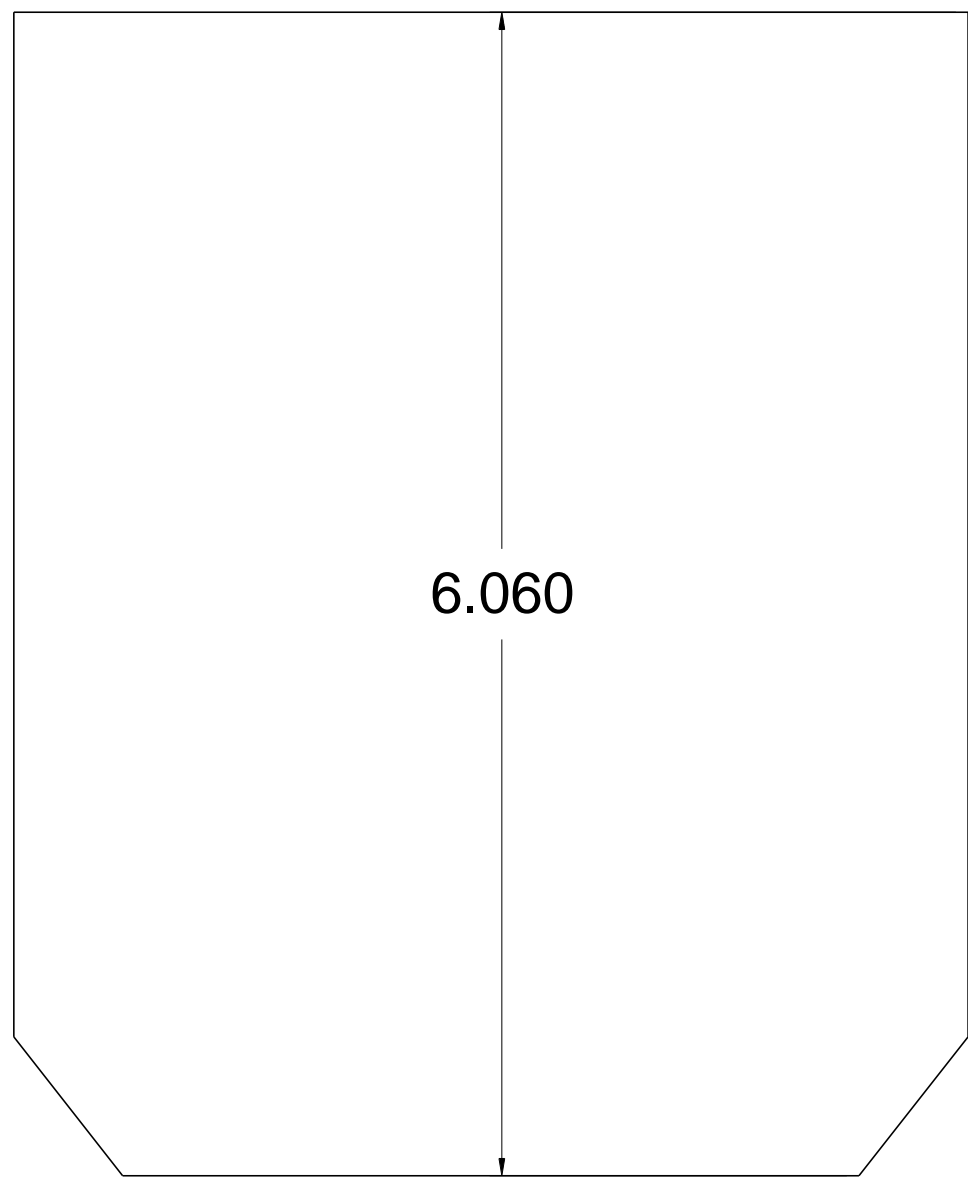
Leg Bottom Components



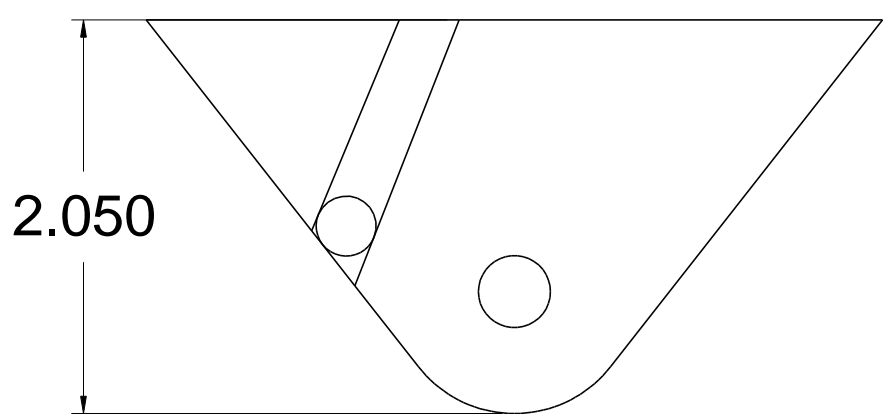
Bottom Outside - .25 thick - make 1



Bottom Outside - .125 thick - make 1



Bottom Inside - .375 thick - make 1



Bottom Inner - .375 thick - make 1

Leg Drawings pg 1/5

Copyright Media-Conversions - Released for non-commercial use ONLY!

DRAWN	DATE	<div>MediaConversions</div>		
CHECKED	1/5/2012			
QA				
MFG				
APPROVED		SIZE	FSCM NO.	DWG NO.
		C		Box Beam Legs - Bottom
		SCALE		SHEET